



King's College Hospital
NHS Foundation Trust



Trainee Pharmacist

Information Pack

Contents

1.1 King's College Hospital NHS Foundation Trust	3
1.1 King's in Numbers.....	4
1.2 King's College Hospital Site	6
1.2.1 Getting there:.....	6
1.3 Princess Royal University Hospital Site	6
1.3.1 Getting there:.....	6
1.4 Our values.....	7
1.5 Our Vision	7
1. The Pharmacy	9
3. Services.....	9
3.1 Clinical Services	9
3.2 Medicines Information	10
4. Education and Training.....	10
5. Foundation Trainee Pharmacist Training	10
5.1 Overview	10
5.2 Training Base	10
5.3 Designated Supervisor (Educational Supervisor/Tutor) / Trainer / DPP	11
5.4 The Training Programme.....	11
5.5 Clinical Rotations.....	11
5.6 Prescribing.....	12
5.7 Appraisals and Performance Reviews	12
5.8 CPD and Study.....	12
5.9 Simulation	12
5.10 Cross Sector Placements	12
5.11 NHS England Study Days	13
5.12 Weekend Working and Bank Holidays	13
6. STEP Foundation programme	13
7. Miscellaneous.....	13
7.1 Social Activities.....	13
7.2 Salary	13
7.3 Annual Leave	14
8. Contact Details	14

1.1 King's College Hospital NHS Foundation Trust

King's College Hospital NHS Foundation Trust is one of the UK's largest and busiest teaching Trusts with a turnover of over £1 billion, 1 million patient contacts a year and more than 13,500 staff based across 5 main sites in South East London. The Trust provides a full range of local hospital services across its different sites, and specialist services from King's College Hospital (KCH) sites at Denmark Hill in Camberwell and at the Princess Royal University Hospital (PRUH) site in the London Borough of Bromley.

King's College Hospital

[King's College Hospital NHS Foundation Trust](#)



King's College Hospital main entrance in 2015



Shown in Lambeth

Princess Royal University Hospital

[King's College Hospital NHS Foundation Trust](#)

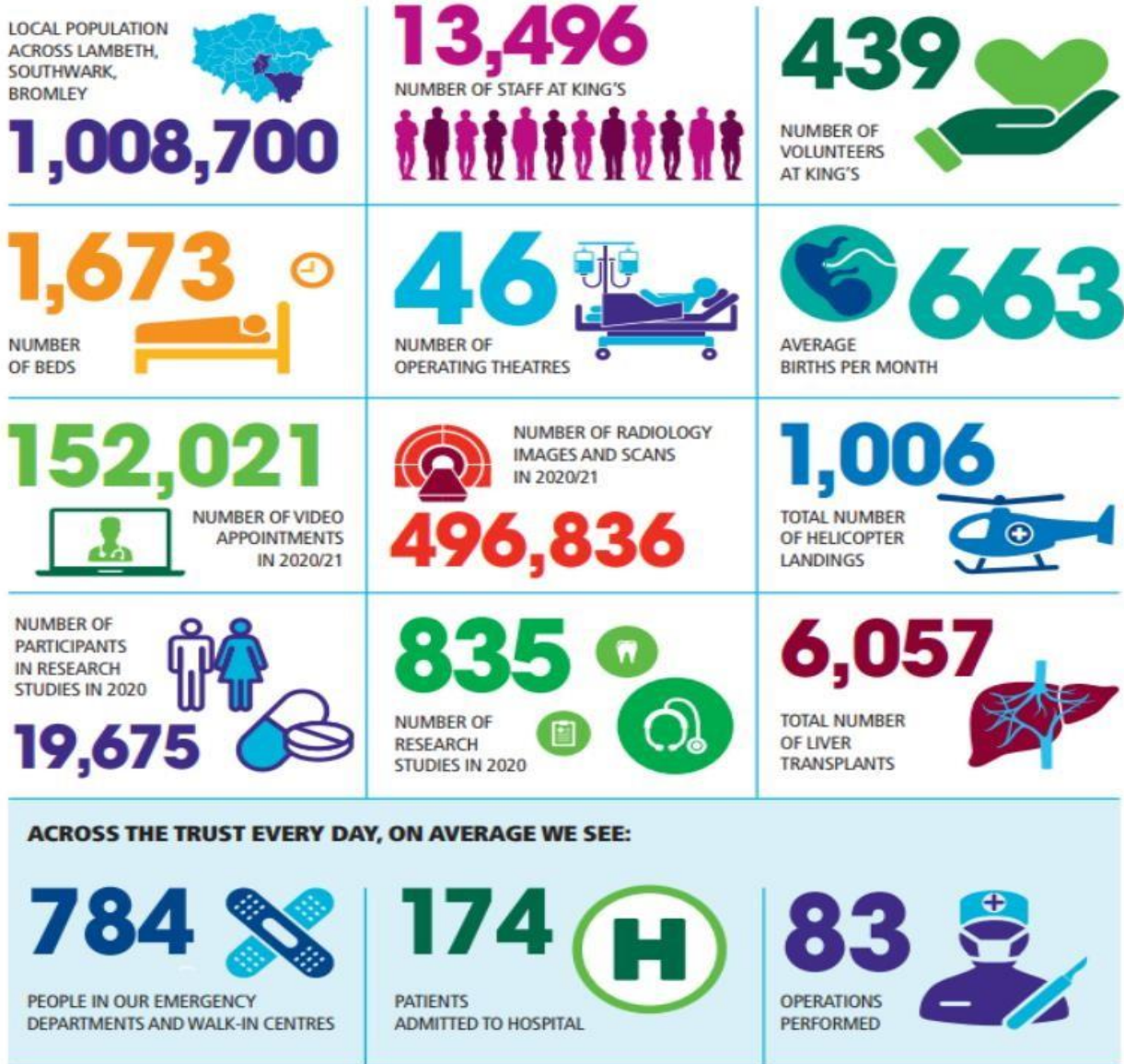


Princess Royal University Hospital main entrance



Shown in Bromley

1.1 King's in Numbers



THE HISTORY OF KING'S

1840
THE FIRST KING'S COLLEGE HOSPITAL OPENS AND IS TRANSFERRED TO ITS PRESENT SITE IN 1870

1845
THE BRITISH UROLOGICAL ASSOCIATION IS FOUNDED AT KING'S

1872
THE BIRMINGHAM CONVENT, NURSING SCHOOL, IS FOUNDED AT KING'S

1877
JESSE LITTLE, FOUNDED BY NURSING, SUBJECTS TO NURSING PRACTICE, ESTABLISHES THE FIRST NURSING SCHOOL IN GREAT BRITAIN AT KING'S

1913
THE NEW KING'S COLLEGE HOSPITAL IS COMPLETED. IT BECOMES ONE OF THE LARGEST V AND QUINCE WINGS

1917
THE QUEEN'S ANATOMY MUSEUM (BASED ON QUINCE WING) IS ESTABLISHED AS A SPECIALIST HOSPITAL FOR THE NEUROLOGICAL SCIENCES

1916
THE OUTPATIENT CLINIC HOSPITAL (BASED ON QUINCE WING) OPENS. MORE THAN 25,000 AMBLYOPEIC TREATMENTS ARE TREATED

1923
KING'S COLLEGE HOSPITAL, DENTON SQUARE, OPENS

1921
PENICILLIN CLINIC ESTABLISHED AS THE FIRST UNIT TO PROVIDE BLOOD-DONOR SERVICE FROM KING'S

1948
THE NHS IS BORN

1973
KING'S PERFORMS THE WORLD'S FIRST ENDOPROSTHETIC SURGERY

1966
KING'S ESTABLISHES ONE OF THE FIRST LIVER TRANSPLANTS IN THE COUNTRY

1986
THE FIRST UK BONE MARROW TRANSPLANT IS PERFORMED AT KING'S

2003
THE PRINCESS ROYAL UNIVERSITY HOSPITAL OPENS

1995
KING'S ESTABLISHES THE UK'S FIRST HOUSE NURSING DEMENTIA CARE & RESEARCH CENTRE

2012
THE KING'S VASCULAR SURGERY CLINIC OPENS

2014
KING'S BECOMES THE FIRST IN PROVIDING ONLINE THERAPY PROVIDING PSYCHOLOGICAL SUPPORT ONLINE

2015
A CHECK-UP KIT IS THE WORLD'S FIRST TO MONITOR YOUR CHESTVIA THROUGH A COMPUTOGRAPHY APP

2016
LUNCH OF THE SCIENCE AT KING'S

2010
THE CELLS SHIMMER INSTITUTE, THE WORLD'S FIRST FOR PALMATELUS, CURE 11, IS OPENED

2011
THE HEPER AVIUS SPHERE LAUNCHES AT THE PRUH

2013
THE PRUH, OPERATING GREEN, HENRY'S SURGERY AND BACKWATER, BEGINS FROM KING'S COLLEGE HOSPITAL, NHS FOUNDATION TRUST

2017
KING'S COLLEGE HOSPITAL, MRI APP FOR CHILDREN

2018
KING'S BECOMES THE FIRST IN THE UK TO PROVIDE PERSONALIZED SURGERY AND DRUGS WITH SINGLE-CELL DNA

2019
KING'S BECOMES THE FIRST TO OFFER TO TREAT PATIENTS WITH COVID-19 THROUGH RECOVER, SERIAL, AND THE NURSING SURVIVAL TRAIL

2020
KING'S WAS THE FIRST IN THE UK TO LAUNCH PATIENTS ONE OF THE FIRST OF RECOVER, SERIAL, AND THE NURSING SURVIVAL TRAIL

2021
THE NEW CLINICAL CARE UNIT AT KING'S OPENS

2005
KING'S PERFORMS THE UK'S FIRST CLINICALLY SUCCESSFUL ISLET TRANSPLANTATION IN A TYPE 1 DIABETIC PATIENT

2008
KING'S IS THE FIRST HOSPITAL IN THE COUNTRY TO TAKE PART IN KIDNEYCARE

2009
KING'S HEALTH PARTNER IS ESTABLISHED

2009
KING'S COMPLETES ITS 1000TH BIRTHDAY CELEBRATIONS

2009
KING'S COMPLETES ITS 1000TH BIRTHDAY CELEBRATIONS

2009
KING'S COMPLETES ITS 1000TH BIRTHDAY CELEBRATIONS

2009
KING'S COMPLETES ITS 1000TH BIRTHDAY CELEBRATIONS

2009
KING'S COMPLETES ITS 1000TH BIRTHDAY CELEBRATIONS

2009
KING'S COMPLETES ITS 1000TH BIRTHDAY CELEBRATIONS

2009
KING'S COMPLETES ITS 1000TH BIRTHDAY CELEBRATIONS

2009
KING'S COMPLETES ITS 1000TH BIRTHDAY CELEBRATIONS

2009
KING'S COMPLETES ITS 1000TH BIRTHDAY CELEBRATIONS

2009
KING'S COMPLETES ITS 1000TH BIRTHDAY CELEBRATIONS

2021
THE NEW CLINICAL CARE UNIT AT KING'S OPENS

2021
THE NEW CLINICAL CARE UNIT AT KING'S OPENS

2021
THE NEW CLINICAL CARE UNIT AT KING'S OPENS

2021
THE NEW CLINICAL CARE UNIT AT KING'S OPENS

2021
THE NEW CLINICAL CARE UNIT AT KING'S OPENS

2021
THE NEW CLINICAL CARE UNIT AT KING'S OPENS

2021
THE NEW CLINICAL CARE UNIT AT KING'S OPENS

2021
THE NEW CLINICAL CARE UNIT AT KING'S OPENS

1.2 King's College Hospital Site

King's College Hospital is a major teaching hospital and trauma centre in the London Borough of Lambeth. It serves as a tertiary referral centre for liver disease, neurology, neurosurgery and dentistry and has the largest critical care complex within the UK.

1.2.1 Getting there:

It is a five-minute walk from Denmark Hill train station (zone two of London). The station is served by regular, direct rail links to central London at Blackfriars, Victoria and St Pancras International as well as to principal stops in south-east London such as Bromley South, Catford, Lewisham and Peckham Rye. It is also on the London Overground route with trains running between Highbury and Islington and Clapham Junction.

The hospital is a 12-minute walk from Loughborough Junction, on Coldharbour Lane. The station is served by trains to London Bridge, St Pancras International, Wimbledon and Elephant & Castle. Bus routes 35, 45 and 345 run from the station to the hospital.

1.3 Princess Royal University Hospital Site

Princess Royal University Hospital (PRUH) is a large acute district general hospital situated in the London Borough of Bromley. It is a part of King's College Hospital NHS Foundation Trust.

1.3.1 Getting there:

By bus

These bus routes stop in the hospital grounds: 261, R3 and R4.

These bus routes stop within a 10-minute walk: 61, 336, 353, 358 and R2

By train

Regular bus services run to the hospital from the nearest mainline stations:

- Bromley South – 61, 261 and 358
- Orpington – 61, 353, R2 and R4

1.4 Our values

At King's, we are a kind, respectful team

Kind. We show compassion and understanding and bring a positive attitude to our work

Respectful. We promote equality, are inclusive and honest, speaking up when needed

Team. We support each other, communicate openly, and are reassuringly professional.



OUR VALUES
AT KING'S WE ARE A KIND, RESPECTFUL TEAM

NHS
King's College Hospital
NHS Foundation Trust

KIND **RESPECTFUL** **TEAM**

Our strategy, *STRONG ROOTS*, *GLOBAL REACH* and vision to be **BOLD** is available online at www.kch.nhs.uk/about/our-strategy

1.5 Our Vision

Our vision is to be **BOLD**, which stands for:

Brilliant people

We attract, retain and develop passionate and talented people, creating an environment where they can thrive.



Outstanding care

We deliver excellent health outcomes for our patients, and they always feel safe, cared for and listened to.



Leaders in research, innovation and education



Diversity, equality and inclusion at the heart of everything we do



1. The Pharmacy

At King's College Hospital, our Pharmacy Service is highly respected and our staff work closely with multi-disciplinary teams. We are patient-centred and progressive. Provision of support and training to progress personal and professional development is of utmost importance to us. If you would like to be part of a successful, passionate, high-profile service, where the most important aspect is to ensure best quality patient care, we may have a job for you. The Trust prides it's self in innovation and progression and the pharmacy department has the highest number of consultant pharmacists within the UK.

In October 2023, we introduced EPIC, a leading electronic patient record system across all our hospitals and community services. EPIC is used in some of the best hospitals around the world, as well as the UK. EPIC will allow everyone involved in a patient's care to have access to their records, whether in hospital, in a community clinic, or at home. Crucially, this will also give our staff a complete overview of a patients' care, allowing them to work more efficiently and have more time to spend with patients.

A HIV satellite pharmacy is based at the Caldecot centre. We also operate surgical and neurology satellite units. There is also an outpatient pharmacy located outside the hospital which is managed by KFM on behalf of the Trust.

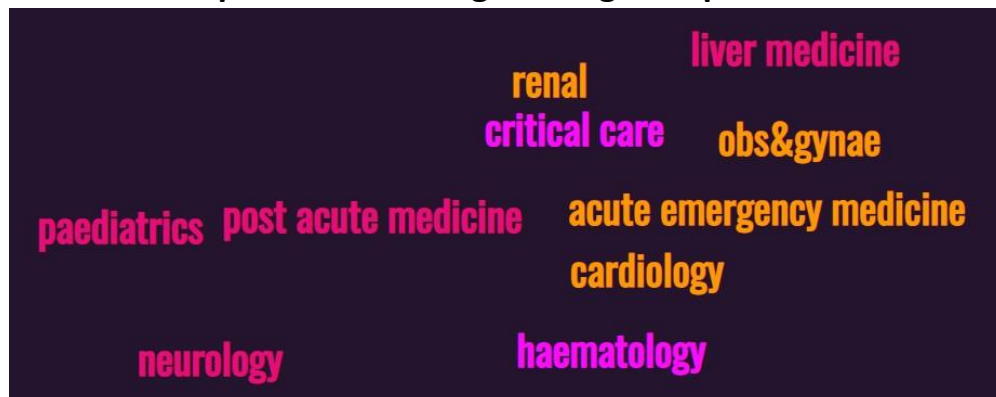
3. Services

3.1 Clinical Services

There are a number of pharmacists and technicians which provide a comprehensive clinical pharmacy service to the hospital.



Clinical Specialities at King's College Hospitals include:



Pharmacists are encouraged to participate on ward rounds, write discharge prescriptions following accreditation, undertake pharmacy practice research and further develop clinical pharmacy.

Trainee pharmacists are encouraged to work as an integral part of the pharmacy team by completing drug histories, assessing the use of patients own drugs, ordering of medicines, discharge co-ordination and counselling patients on the medication. Medicines reconciliation and optimisation is undertaken on all wards, and many trainee pharmacists will have the opportunity to attend multidisciplinary ward rounds.

3.2 Medicines Information

Medicines Information is provided for King's College London Hospital sites by the regional Medicines Information centre at Guy's and St Thomas's Hospital. Trainee pharmacists will have the opportunity to rotate through the Medicines Information department during their trainee year.

A well-resourced Medicines Information service supports the safe, effective and efficient use of medicines by the provision of evidence-based enquiry service for healthcare professionals and patients. Examples of enquiries include advice on adverse drug reactions, drug compatibility, interactions and unlicensed medicines use.

4. Education and Training

The pre-registration pharmacist educational programme director (EPD) has overall responsibility for preregistration training at the trust. You will be in regular contact with the EPD over the course of the year. The EPD ensure that quality criteria are met, including resource, appropriately trained supervisors and monitoring of progress and equal opportunities.

5. Foundation Trainee Pharmacist Training

5.1 Overview

In line with the General Pharmaceutical Council (GPhC) revised standards for education and training of pharmacists, trainee pharmacists who qualify in 2026 are expected to be prescribers. The education programme director and designated supervisors will ensure that you are provided with a comprehensive training programme which encompasses all the GPhC learning outcomes, paving the way for you to become confident and competent pharmacists.

We will provide a wealth of support, however we expect you to think and act as a pharmacist from day one of your trainee pharmacist year.

Completion of your Trainee Pharmacist training year at King's College Hospital NHS Trust will provide you with an all-encompassing start to your career and give you the opportunity to work in a unique healthcare environment in one of London's busiest and biggest teaching hospitals.

5.2 Training Base

Recruitment is completed using a national recruitment portal (known as Oriel), undergraduates may apply for one of two bases sites, King's College Hospital – Denmark Hill site or the Princess Royal University hospital – Bromley site. If successful,

this will be your base site where you be predominantly based and you will complete your induction, dispensary rotations and weekend working at your base site. You will however be expected to rotate across both sites.

5.3 Designated Supervisor (Educational Supervisor/Tutor) / Trainer / DPP

Both sites have a specialist pharmacist for education who will manage trainee pharmacists and STEP pharmacists. There is also a principal pharmacist for education and training who oversees the program. As you rotate through the specialities, you will be allocated a practice supervisor who will ensure you cover the GPhC learning outcomes through the means of informal ward based assessments and written evidences.

5.4 The Training Programme

You will undertake a rotational training programme. This is to ensure that you are exposed to, and gain experience in, many areas of pharmacy practice. A formal timetable is prepared at the beginning of each year to provide structure and direction to your training. The areas that you will rotate through are:

12 months acute	9 month acute and 3 month GP	King's Health Partners
Induction	Induction	Induction
Dispensary – Inpatients	Dispensary – Inpatients	Medicines Management
Dispensary – Outpatients	Dispensary – Outpatients	Audit/Service Improvement
Medicines Information	Medicines Information	General Practice
Clinical Services (Surgery/Medicine/Paediatrics)	Clinical Services (Surgery/Medicine/Paediatrics)	Clinical Services (Paediatrics and Medicine)
Medicines Management	Medicines Management	Prescribing
Technical Services	Technical Services	Specialist rotations neurology and liver
Medication Safety	Medication Safety	Mental health (SLAM)
Community Pharmacy	General Practice	Community Pharmacy
Audit/Service Improvement	Audit/Service Improvement	
Specialist Week	Community Pharmacy	
Mental health (SLAM or Oxleas)	Specialist Week	
Prescribing	Mental health (SLAM or Oxleas)	
	Prescribing	

We currently offer several programs therefore please ensure you select the program that you prefer. Please note rotations are subject to change based on service need and GPhC/NHSEngland requirements.

5.5 Clinical Rotations

You will gain a great deal of clinical knowledge by rotating through the specialities above. A structured and varied rotation will give you the tools and exposure to be well prepared for the registration assessment. During your clinical rotations, you will be required to review, monitor and produce pharmaceutical care plans for patients on the ward. Each rotation will have their own set objectives to mirror the speciality. In line with the new prescribing standards, you will be required to focus on diagnostic skills and monitoring patients, with the opportunity of developing these skills in the simulation centre (see 5.9).

5.6 Prescribing

In line with the new standards for the initial education and training of pharmacists. We have recently piloted a prescribing programme for trainee pharmacists. This will likely to implement going forward so that trainee pharmacists can be 'prescribing ready' for when they qualify.

5.7 Appraisals and Performance Reviews

You will have regular appraisals and reviews to monitor your performance and ensure your development is of an acceptable standard. There are many opportunities to discuss your own individual learning and developmental needs. GPhC reviews will be conducted by your designated supervisor as well as 2 weekly review sessions. Practice supervisors will conduct appraisals at the end of each rotation.

5.8 CPD and Study

In addition to the clinical rotation, weekly teaching is provided for trainee pharmacists throughout the year. We offer a mixture of in house study sessions every Monday afternoon where teaching is split between specialist clinical pharmacists, trainee pharmacist presenting on minor ailments and the Medicines, Ethics and Practice (MEP) document or NHS England mandated training such as calculation exams, first aid training and a mock registration assessment.

5.9 Simulation

Trainees will be given the opportunity to undertake simulation training, where they will be given the opportunity to experience training in a modern safe environment.



5.10 Cross Sector Placements

In 25/26 dependant on the program that you select as part of oriel you will have exposure to a variety of cross sector placements. Please see the table in section 5.4 for more information.

5.11 NHS England Study Days

NHS England organise a programme of virtual study days, online training and webinars throughout the year, and dedicated study time is provided. These study days are designed to complement the training received at the base hospital, and also cover areas which are better dealt with in a larger group, involving specialist speakers.

Examples of study days include: First Aid, calculations, responding to symptoms, Law and Ethics etc. There is also a large amount of training material on the virtual learning environment.

5.12 Weekend Working and Bank Holidays

You will be required to work weekends in line with the rota of the base site you are allocated. Weekend commitment is approximately 1 in 6 weekends and 1 bank holiday a year.

6. STEP Foundation programme



King's college hospital NHS trust operates a STEP foundation programme. The Structured Education and Training for Pharmacists (STEP) is a programme that trainee pharmacists can apply for to start after completion of their registration year. STEP offers competency based training, education and experience over three years. The programme equips pharmacists with the skills and knowledge to provide the highest quality of professional care and to help progress their careers. Pharmacists are given the opportunity to rotate through a range of speciality areas with the opportunity to work at different hospitals. The Joint Programmes Board (JPB) Diploma in General Pharmacy Practice (PG Dip GPP) is fully integrated into the STEP programme. Trainee Pharmacists are provided with careers advice and interview technique training as part of their training programme.

7. Miscellaneous

7.1 Social Activities

Both Pharmacy departments have a strong tradition of being a social bunch! Every Wednesday, the pharmacy team at Denmark Hill host a quiz at a nearby pub. There is also a running club for those wanting to stay active. Staff can also take advantage of the various discounts available at local shops, restaurants and bars located in nearby Camberwell and Brixton (Denmark Hill site).

7.2 Salary

At the time of writing, trainee pharmacists are paid at a Band 5 agenda for change salary, which is currently £28,407. Due to the location of both hospitals, staff will be entitled to a pay uplift due to the London weighting allowance. King's college

hospital at the Denmark hill site entitles employees to 20% on top of basic salary, subject to a minimum payment of £4,888 and a maximum payment of £7,377. The Princess Royal University Hospital site entitles employees to 15% on top of basic salary, subject to a minimum payment of £4,108 and a maximum payment of £5,177.

7.3 Annual Leave

You will be entitled to 27 days holiday a year, plus eight bank holidays. Employees who have worked for the NHS for 5 years are entitled to 29 days.

8. Contact Details

For further information, please contact:

King's College Hospital, Denmark Hill Site:

Siwan Jenkins
Specialist Pharmacist - Education and Training, Denmark Hill
Tel: 020 3299 4076
E-mail: siwan.jenkins1@nhs.net

Princess Royal University Hospital:

Kudzai Dongo
Specialist Pharmacist - Education and Training, PRUH site
Tel: 01689 864003
E-mail: kudzai.dongo2@nhs.net

Cross Site

Dean Selway-Abbott
Principal Pharmacist E&T for both sites
Email deanselway.abbott@nhs.net