

## Our commitment to you

We take the issue of privacy and dignity for our patients very seriously, and we have a clear policy on providing same-sex accommodation.

Our aim is to provide separate accommodation (sleeping areas and bathroom and toilet facilities) for women and men wherever possible. For all our inpatient wards and our day case areas where both women and men are treated, there are separate facilities for both sexes, and we work hard to ensure that you are cared for in the appropriate area.



## What do we mean by same-sex accommodation?

Providing same-sex accommodation means that you will be cared for in a ward or an area of a ward (a bay or a room) with other people of the same sex as you. The toilet and bathroom allocated to you will only be for people of the same sex.

You may still see patients of the opposite sex in communal areas of the ward like day rooms and corridors. These patients will not be sleeping in the same area as you and they will use a different toilet and bathroom.

## Bathroom and toilet facilities

When you are admitted to the ward, the nurse looking after you will show you which bathroom and toilet to use. They will only be for patients of the same sex as you, and they will be clearly signed.

If you need help to use the toilet or bathroom, such as a hoist or special shower, you may be taken to a "unisex" bathroom, but a member of staff will be with you and there will be no other patients in the bathroom with you at the same time.

## When we can't provide same-sex accommodation

Sometimes, it is necessary for female and male patients to be cared for in the same area, for example if someone needs specialist medical care which we can only provide in a certain place like an intensive care unit. If this happens, our staff will make sure that privacy and dignity is maintained at all times, and the patient will be moved to a same-sex area as soon as it is safe to do so.

## Other areas of the hospital

Sometimes, you will need to go to other areas of the hospital during your stay here, for example to have a scan or an x-ray. Most other departments do not have separate areas for female and male patients, but if you are taken to another area the staff caring for you will make sure you are appropriately dressed and covered.



If you need an investigation, treatment or operation where you need to wear a theatre gown, you can wear your dressing gown over the top until you are inside the treatment room.

### Visitors and staff

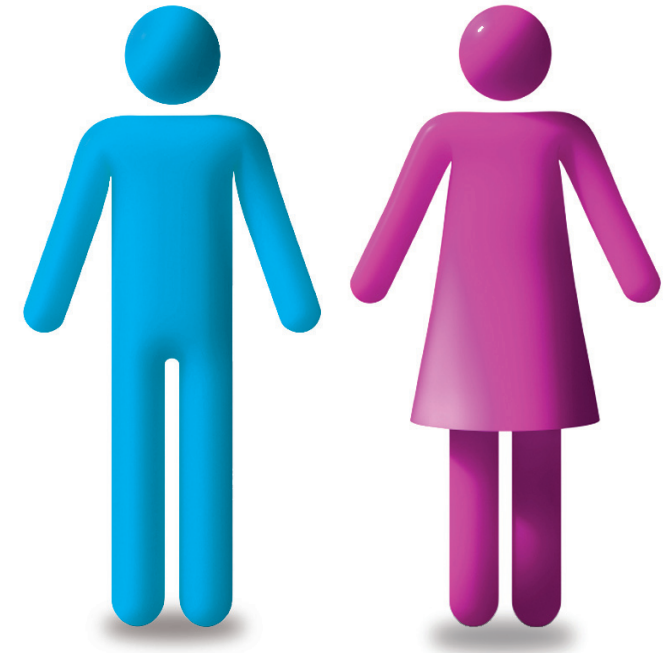
Visitors to wards and departments are not restricted by their gender. Each ward has its own visiting times and arrangements and these will be explained to you when you are admitted. You will also be cared for by both female and male staff in most areas.



### Monitoring our commitment to same-sex accommodation

When you are admitted, on the rare occasion, you may need to be placed in a mixed sex area initially. The Trust will monitor patients on a daily basis and ensure that you are relocated to a same-sex area within a maximum of 24 hours.

# Same-sex accommodation at King's



Please let a member of staff know if you have any questions or concerns.

You can also contact our Patient Advice and Liaison (PALS) team on 020 3299 3625/3601.